

Designed with Love. Created by 3D printing. Finished by Hand.

# RECOMMENDED RETAIL PRICES

Verkaufspreise zzgl. 19% Mwst

Prices excluding VAT. Lead time for shipment: 3-9 weeks.  
Prices valid for 220V - EU and UK wiring as from March 2014.  
Please contact us should you require US wiring.





### BLOOM

**shade** closed Ø 17 cm, H 21 cm  
open Ø 38 cm, H 21 cm  
**material** polyamide  
**colours** white  
**lamp** CE, halogen 210-230V G9, max 40W  
**plugs** EU/UK



### CHAOS.MGX

**shade** 11 x 11 x 11 cm  
**material** polyamide  
**colours** white  
**lamp** CE, halogen 12V G4, max 20W  
**plugs** EU/UK



### GAMETE.MGX

**shade** large: 27 x 13 x 33 cm  
small: 23 x 11 x 27 cm  
**material** polyamide  
**colours** white  
**lamp** large: CE, halogen 210-230V G9, max 40W  
small: CE, halogen 210-230V G9, max 25W  
**plugs** EU/UK



### LILY.MGX

**shade** small: Ø 11.8 cm, H 13 cm  
large Ø 16.4 cm, H 18 cm  
**material** polyamide  
**colours** white  
**lamp** CE, halogen 210-230V G9, max 40W  
**plugs** EU/UK

FLOOR



#### FLOOR LAMP

large shade  
total height: 163 cm

€1119.42



#### FLOOR LAMP

large shade  
total height: 143 cm

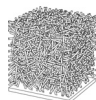
€624.97

LOW TABLE



LOW TABLE LAMP  
total height: 45.8 cm

€2100.00



LOW TABLE LAMP  
total height: 13.5 cm

€520.66



#### LOW TABLE LAMP

dimensions:  
small Ø 11.8, H 15 cm  
large Ø 16.4, H 20cm

small ..... €390.50

large ..... €594.42

HIGH TABLE



HIGH TABLE LAMP  
total height: 60.8 cm

€2100.00



HIGH TABLE LAMP  
total height: 43 cm

€538.02



#### TABLE LAMP

total height:  
white base with large shade: 59 cm  
metal base with small shade: 52 cm  
metal base with large shade: 70 cm

white base ..... €1518.60

metal base (S) ..... €650.83

metal base (L) ..... €1080.37



#### HIGH TABLE LAMP

small shade  
total height: 58 cm

price ..... €416.53



### MINISHAKES.MGX

**shade** *small:* Ø 11.4 cm, H 12.7 cm  
*large* Ø 17.6 cm, H 19.6 cm  
**material** epoxy  
**colours** black  
**lamp** *small:* CE, halogen 12V G4, max 20W  
*large* CE: halogen 12V GY6.35, max 50W  
**plugs** EU/UK



### OPEN\_CUBE.MGX

**shade** 15 x 15 x 15 cm  
**material** epoxy  
**colours** terra cotta, black  
**lamp** CE, halogen 210-230V G9, max 25W  
**plugs** EU/UK



### QUIN.MGX

**shade** *small:* Ø 13.9 cm; *large:* Ø 22.8 cm  
**material** polyamide  
**colours** white  
**lamp** *large:* CE, halogen 210-230V G9, max 40W  
*small:* CE, halogen 210-230V G9, max 25W  
**plugs** EU/UK



### TORUS.MGX

**shade** Ø 20 cm, H 26.4 cm  
**material** polyamide  
**colours** white  
**lamp** CE, halogen 210-230V G9, max 40W  
**plugs** EU/UK

Ceiling & wall lights: see pages 6-7



**FLOOR LAMP**  
large shade  
total height: 155 cm

..... **€472.93**



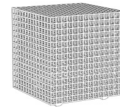
**FLOOR LAMP**  
large shade  
total height: 143 cm

..... **€867.77**



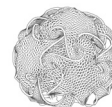
**FLOOR LAMP**  
**METAL BASE**  
total height: 143 cm

..... **€1084.71**



**TABLE LAMP**  
total height: 16.3 cm

..... **€386.16**



**LOW TABLE LAMP**  
small/large shade

total height:  
small: 13 cm  
large: 20 cm

small ..... **€386.16**

large ..... **€780.12**



**TABLE LAMP**  
small shade  
total height: 29.6 cm

..... **€238.64**



**HIGH TABLE LAMP**  
small shade  
total height: 58 cm

..... **€412.19**

FLOOR

LOW TABLE

HIGH TABLE



**TULIP.MGX**

**shade** Ø 11.5, H 13 cm  
**material** epoxy, polyamide  
**colours** white, terra cotta, bordeaux, amber  
**lamp** CE, halogen 210-230 G9, max 25W  
**plugs** EU/UK

**available patterns:**  
 woven, perforated, rippled



**TWISTER.MGX**

**shade** *small:* Ø 10.5 cm, H 15.5 cm  
*large* Ø 13 cm, H 19 cm  
**material** polyamide  
**colours** white  
**lamp** *small:* CE, halogen 12V G4, max 20W  
*large:* CE, halogen 12V GY6.35, max 50W  
**plugs** EU/UK

FLOOR



**FLOOR LAMP**  
 large shade  
**total height:** 154 cm  
 ..... **€585.74**

LOW TABLE



**TABLE LAMP**  
**total height:** 40 cm  
 colored\* ..... **€302.85**  
 white ..... **€389.63**



**TABLE LAMP**  
**total height:** 47 cm  
 colored\* ..... **€302.85**  
 white ..... **€389.63**



**TABLE LAMP**  
**total height:** 57 cm  
 colored\* ..... **€302.85**  
 white ..... **€389.63**

HIGH TABLE



**TABLE LAMP**  
 small shade  
**total height:** 56 cm  
 ..... **€455.58**

\* only available with rippled pattern



## CADENCE.MGX

**shade** *small:* Ø 8 cm, H 25 cm  
*medium:* Ø 10 cm, H 31 cm  
*large:* Ø 12 cm, H 37 cm

**material** polyamide  
**colours** white  
**lamp** CE, halogen 12V G4, max 20W  
**cord** max 200 cm



## DAMNED.MGX

**shade** Ø 63 x 27.3 cm  
**material** polyamide  
**colours** white  
**lamp** CE, CFL 210-230V E27, max 13W  
**cord** max 200 cm



## DETAIL.MGX

**shade** Ø 13.9cm  
**material** polyamide  
**colours** white  
**lamp** CE, halogen 12V G4, max 20W  
**cord** max 200 cm



## DIATOM.MGX

**shade** *small:* Ø 14 cm  
*large:* Ø 20 cm

**material** epoxy  
**colours** terra cotta, amber  
**lamp** *small:* CE, CFL 210-230V G9, max 9W  
*large:* CE, CFL 210-230V E27, max 23W  
**cord** max 200 cm



### PENDANT LAMP

**canopy:** Ø 13 cm, H 2.8 cm

small ..... **€342.77**  
medium ..... **€429.55**  
large ..... **€1036.98**



### PENDANT LAMP

**canopy:** Ø 24.5 cm, H 20.3 cm

..... **€25000.00**



### PENDANT LAMP

**canopy:** Ø 13 cm, H 2.8 cm

..... **€429.55**



### PENDANT LAMP

**canopy:** *small:* Ø 13 cm, H 2.8 cm  
*large:* Ø 10 cm, H 3.7 cm

small ..... **€234.30**  
large ..... **€538.02**



### TRIPLET

**straight canopy:** 79 x 9 x 2.7 cm

small ..... **€997.93**  
medium ..... **€1279.96**



**round canopy:** Ø 40 cm, H 4 cm

S+M+L ..... **€1470.87**



### TRIPLET

**straight canopy:** 79 x 9 x 2.7 cm

..... **€1258.26**



**round canopy:** Ø 40 cm, H 4 cm

..... **€1557.64**



### TRIPLET

**straight canopy; small** 79 x 9 x 2.7 cm

..... **€715.91**



**round canopy; small** Ø 40 cm, H 4 cm

..... **€950.21**



### CHANDELIER

**5 UNITS; S+S+M+M+L**  
**round canopy**  
round pattern: Ø 60 cm, H 4 cm

..... **€2078.31**



**9 UNITS; small**  
**square canopy**  
round pattern: 45 x 45 x 5.1 cm  
square pattern: 45 x 45 x 5.1 cm

..... **€2703.10**



### CHANDELIER

**5 UNITS**  
**round canopy**  
round pattern: Ø 60 cm, H 4 cm

..... **€2425.41**



### CHANDELIER

**5 UNITS; small**  
**round canopy**  
round pattern: Ø 60 cm, H 4 cm

..... **€1470.87**



**9 UNITS; small**  
**square canopy**  
round pattern: 45 x 45 x 5.1 cm  
square pattern: 45 x 45 x 5.1 cm

..... **€2386.36**

**16 UNITS; small**  
**square canopy**  
round pattern: 74 x 74 x 5.1 cm;  
square pattern: 60 x 60 x 5.1 cm

..... **€4035.12**

**25 UNITS; small**  
**square canopy**  
round pattern: 74 x 74 x 5.1 cm  
*(only available in amber)*

..... **€6204.55**

PENDANT

TRIPLET

CHANDELIER



## DRAGONFLY.MGX

**shade** *small*: Ø 19 cm, H 10 cm  
*large*: Ø 33 cm, H 20 cm

**material** epoxy

**colours** terra cotta, amber

**lamp** *small*: CE, CFL 210-230V GX53, max 13W  
*large*: CE, CFL 210-230V E27, max 20W

**cord** max 200 cm



## FLAME.MGX

**shade** 15.7 x 17 x 22 cm

**material** polyamide

**colours** white

**lamp** CE, halogen 12V G4, max 20W

**cord** max 200 cm



## OMI.MGX

**shade** 30 x 30 x 12.7 cm

**material** polyamide

**colours** white

**lamp** CE, halogen 12V G4, max 20W

**cord** max 200 cm



## QUIN.MGX

**shade** *small*: Ø 13.9 cm  
*large*: Ø 22.8 cm

**material** polyamide

**colours** white

**lamp** CE, halogen 12V G4, max 20W

**cord** max 200 cm

Floor & table lamps: see page 3

PENDANT



### PENDANT LAMP

**canopy:**  
*small*: Ø 13 cm, H 2.8 cm  
*large*: Ø 10 cm, H 4 cm

*small* ..... **€286.13**  
*large* ..... **€607.43**

TRIPLLET



### TRIPLLET

*small shade*  
**straight canopy:** 79 x 9 x 2.7 cm

..... **€841.58**

CHANDELIER



### PENDANT LAMP

**canopy:** Ø 13 cm, H 2.8 cm

..... **€733.26**



### TRIPLLET

**straight canopy:** 79 x 9 x 2.7 cm

..... **€1384.09**

**round canopy:** Ø 40 cm, H 4 cm

..... **€1731.20**



### CHANDELIER

**5 UNITS**  
**round canopy**  
round pattern: Ø 60 cm, H 4 cm

..... **€2733.47**



### PENDANT LAMP

**canopy:** Ø 13 cm, H 2.8 cm

..... **€954.55**



### PENDANT LAMP

**canopy:** Ø 13 cm, H 2.8 cm

*small* ..... **€347.11**  
*large* ..... **€867.77**



### TRIPLLET

**straight canopy; small:**  
79 x 9 x 2.7 cm

..... **€1041.32**

**round canopy; small:**  
Ø 40 cm, H 4 cm

..... **€1123.76**



### CHANDELIER

**5 UNITS; small**  
**round canopy**  
round pattern: Ø 60 cm, H 4 cm

..... **€1692.15**



**9 UNITS; small**  
**square canopy**  
round pattern: 45 x 45 x 5.1 cm  
square pattern: 45x 45 x 5.1 cm

..... **€2603.31**

**16 UNITS; small**  
**square canopy**  
round pattern: 74 x 74 x 5.1 cm  
square pattern: 60 x 60 x 5.1 cm

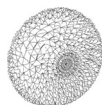
..... **€4338.84**

**25 UNITS; small**  
**square canopy**  
round pattern: 74 x 74 x 5.1 cm

..... **€6508.26**

**KRIZANT.MGX**

**material** polyamide  
**colours** white  
**lamp** CE, CFL 210- 230V GX53, max 13W



**SCONCE**  
**dimensions:**  
 Ø 25cm, H 7cm  
 ..... **€520.66**

**QUIN.MGX**

**material** polyamide  
**colours** white  
**lamp** CE, CFL 210- 230V GX53, max 13W

Floor & table lamps: see page 3



**SCONCE**  
**dimensions:**  
 H 11.6 cm, Ø 22.8 cm  
 ..... **€559.71**

**FORBIDDEN\_FRUIT.MGX**

**FRUIT BOWL**  
**dimensions**  
 39.5 x 27.1 x 5 cm  
**material:** epoxy  
**colours:** bordeaux, black  
 ..... **€607.43**

**ONE\_SHOT.MGX**

**STOOL**  
**dimensions**  
 folded Ø 11cm, H 65 cm  
 open: Ø 32cm, H 40.5 cm  
**material:** polyamide  
**colours:** white  
 ..... **€2165.08**

**HIDDEN.MGX**

**VASE**  
**dimensions**  
 normal: 14.2 x 14.2 x 14.2 cm  
 big: 27 x 27 x 27 cm  
 tall: 16 x 16 x 28 cm  
 low: 14.2 x 14.2 x 7.7 cm  
**material:** polyamide  
**colours:** white



normal ..... **€303.45**



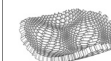
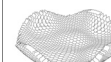
big ..... **€1648.50**



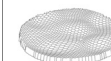
tall ..... **€867.30**



low ..... **€260.40**

**SILVER\_HONEY.MGX**  
**BLACK\_HONEY.MGX****FRUIT BOWLS****BLACK\_HONEY.MGX**

**dimensions**  
 small: 27.3 x 27.5 x 7.3 cm  
 curved: 39.6 x 40.3 x 11.4 cm  
 flat: 40.2 x 40.3 x 5.4 cm  
**material:** epoxy  
**colour:** black



small ..... **€260.40**



curved ..... **€997.50**

flat ..... **€737.63**

**SILVER\_HONEY.MGX**

**dimensions**  
 27.3 x 27.5 x 7.3 cm  
**material:** alumide  
**colour:** gray

..... **€651.00**

catalogue page	product	model	colour	code	price
10	<b>BLOOM</b>	low table	white	BLO.TB50.CE.002	€2100.00
		high table	white	BLO.TB50.CE.001	€2100.00
12	<b>CADENCE</b>	pendant – S	white	CAD.PT30.CE.001	€342.77
		pendant – M	white	CAD.PT40.CE.001	€429.55
		pendant – L	white	CAD.PT50.CE.001	€1036.98
		triplet straight – S	white	CAD.TR30.CE.001	€997.93
		triplet straight – M	white	CAD.TR40.CE.001	€1279.96
		triplet round plate – SML	white	CAD.TRR3.CE.001	€1470.87
		5 units round plate – SSMML	white	CAD.QTR5.CE.001	€2078.31
		9 units square plate – S	white	CAD.CH09.CE.001	€2703.10
16	<b>CHAOS</b>	low table	white	CHA.LT30.CE.001	€520.66
		high table	white	CHA.TB30.CE.001	€538.02
20	<b>DAMNED</b>	chandelier	white	DAM.PT60.CE.001	€25000.00
22	<b>DETAIL</b>	pendant	white	DET.PT30.CE.001	€429.55
		triplet straight	white	DET.TR30.CE.001	€1258.26
		triplet round plate	white	DET.TRR3.CE.001	€1557.64
		5 units round plate	white	DET.QTR5.CE.001	€2425.41
26	<b>DIATOM</b>	pendant – S	amber	DIA.PT30.CE.001	€234.30
			terra cotta	DIA.PT30.CE.002	€234.30
		pendant – L	amber	DIA.PT50.CE.001	€538.02
			terra cotta	DIA.PT50.CE.002	€538.02
		triplet straight – S	amber	DIA.TR30.CE.001	€715.91
			terra cotta	DIA.TR30.CE.002	€715.91
		triplet round plate – S	amber	DIA.TRR3.CE.001	€950.21
			terra cotta	DIA.TRR3.CE.002	€950.21
		5 units round plate – S	amber	DIA.QTR5.CE.001	€1470.87
			terra cotta	DIA.QTR5.CE.002	€1470.87
		9 units square plate – S	amber	DIA.CH09.CE.001	€2386.36
			terra cotta	DIA.CH09.CE.002	€2386.36
		16 units square plate – S	amber	DIA.CH16.CE.001	€4035.12
			terra cotta	DIA.CH16.CE.002	€4035.12
25 units square plate – S	amber	DIA.CH25.CE.001	€6204.55		
28	<b>DRAGONFLY</b>	pendant – S	amber	DRA.PT30.CE.001	€286.13
			terra cotta	DRA.PT30.CE.002	€286.13
		pendant – L	amber	DRA.PT50.CE.001	€607.43
			terra cotta	DRA.PT50.CE.002	€607.43
		triplet small	amber	DRA.TR30.CE.001	€841.58
	terra cotta	DRA.TR30.CE.002	€841.58		
30	<b>FLAME</b>	pendant	white	FLA.PT30.CE.001	€733.26
		triplet straight	white	FLA.TR30.CE.001	€1384.09
		triplet round plate	white	FLA.TRR3.CE.001	€1731.20
		5 units round plate	white	FLA.QTR5.CE.001	€2733.47
32	<b>GAMETE</b>	high table metal – S	white	GAM.TB30.CE.001	€650.83
		high table – white base – L	white	GAM.TB50.CE.001	€1518.60
		high table – metal base – L	white	GAM.TB50.CE.003	€1080.37
		floor	white	GAM.FL40.CE.001	€1119.42
36	<b>KRIZANT</b>	wall sconce	white	KRI.SC50.CE.001	€520.66
38	<b>LILY</b>	low table – S	white	LIL.LT30.CE.001	€390.50
		low table – L	white	LIL.LT50.CE.001	€594.42
		high table	white	LIL.TB30.CE.001	€416.53
		floor	white	LIL.FL50.CE.001	€624.97
48	<b>MINISHAKES</b>	high table	black	MIN.TB30.CE.002	€238.64
		floor	black	MIN.FL50.CE.002	€472.93



catalogue page	product	model	colour	code	price
52	<b>OMI</b>	pendant	white	OMI.PT50.CE.001	€954.55
54	<b>OPEN_CUBE</b>	low table	terra cotta	OCU.TB30.CE.001	€386.16
			black	OCU.TB30.CE.002	€386.16
58	<b>QUIN</b>	low table – small	white	QUI.TB30.CE.001	€386.16
		low table – large	white	QUI.TB50.CE.001	€780.12
		high table	white	QUI.TB30.CE.003	€412.19
		wall sconce	white	QUI.SC50.CE.001	€559.71
		floor	white	QUI.FL50.CE.001	€867.77
		pendant – S	white	QUI.PT30.CE.001	€347.11
		pendant – L	white	QUI.PT50.CE.001	€867.77
		triplet straight – S	white	QUI.TR30.CE.001	€1041.32
		triplet round plate – S	white	QUI.TRR3.CE.001	€1123.76
		5 units round plate – S	white	QUI.QTR5.CE.001	€1692.15
		9 units square plate – S	white	QUI.CHO9.CE.001	€2603.31
		16 units square plate – S	white	QUI.CH16.CE.001	€4338.84
		25 units square plate – S	white	QUI.CH25.CE.001	€6508.26
70	<b>TORUS</b>	floor – metal base	white	TOR.FL50.CE.003	€1084.71
74	<b>TULIP</b>	high table – woven pattern – low	white	TUL.TBW3.CE.021	€389.63
		high table – woven pattern – medium	white	TUL.TBW3.CE.014	€389.63
		high table – woven pattern – high	white	TUL.TBW3.CE.007	€389.63
		high table – perforated pattern – low	white	TUL.TBP3.CE.021	€389.63
		high table – perforated pattern – medium	white	TUL.TBP3.CE.014	€389.63
		high table – perforated pattern – high	white	TUL.TBP3.CE.007	€389.63
		high table – rippled pattern – low	amber	TUL.TBR3.CE.015	€302.85
			terra cotta	TUL.TBR3.CE.016	€302.85
			bordeaux	TUL.TBR3.CE.018	€302.85
			white	TUL.TBR3.CE.021	€389.63
		high table – rippled pattern – medium	amber	TUL.TBR3.CE.008	€302.85
			terra cotta	TUL.TBR3.CE.009	€302.85
			bordeaux	TUL.TBR3.CE.011	€302.85
			white	TUL.TBR3.CE.014	€389.63
		high table – rippled pattern – high	amber	TUL.TBR3.CE.001	€302.85
			terra cotta	TUL.TBR3.CE.002	€302.85
			bordeaux	TUL.TBR3.CE.004	€302.85
			white	TUL.TBR3.CE.007	€389.63
78	<b>TWISTER</b>	high table	white	TWI.TB30.CE.001	€455.58
		floor	white	TWI.FL50.CE.001	€585.74
84	<b>FORBIDDEN_FRUIT</b>	fruit bowl	bordeaux	FBF.FB30.002	€607.43
			black	FBF.FB30.003	€607.43
86	<b>HIDDEN</b>	vase – small	white	HID.VS30.001	€303.45
		vase – low	white	HID.VSL3.001	€260.40
		vase – tall	white	HID.VST3.001	€867.30
		vase – big	white	HID.VS50.001	€1648.50
88	<b>ONE_SHOT</b>	stool	white	ONE.ST50.001	€2165.08
92	<b>SILVER/BLACK_HONEY</b>	fruit bowl – small	black	BHO.CV30.001	€260.40
			silver	SHO.CV30.001	€651.00
		fruit bowl – curved	black	BHO.CV50.001	€997.50
		fruit bowl – flat	black	BHO.FL50.001	€737.63



**QUOTATION**

All orders placed by a Buyer are accepted and all contracts are made subject to these terms and conditions which shall prevail and be effective notwithstanding any variations or additions contained in any order or other document submitted by the Buyer. No modification of these Terms shall be binding upon Materialise or any of its subsidiaries or affiliated companies (hereafter 'Materialise') unless made in writing by an authorised representative of Materialise. Every quotation issued by Materialise is without any obligation until consented in writing. Order confirmation by Materialise implies the commencement of the agreement. No modification to the quotation or the terms of manufacture stipulated can be made unless agreed by both parties in writing. Verbal undertakings by and agreements made with staff of Materialise and/or its representatives are not binding upon Materialise until and in so far as they have been confirmed in writing.

**LIMITATION OF LIABILITY**

Materialise is liable as a supplier of products. The Buyer undertakes to include all requirements and specifications relating to the products ordered in the quotation. Since the circumstances in which these products are ordered and used are under the sole control of the Buyer, the latter recognises his responsibility for these circumstances. Under no circumstance can Materialise be held liable for any product defects or specifications have been requested/analysed in the quotation phase.

Inherent to the nature of the product delivered and to the manufacturing techniques used are the possibility of bubbles occurring and slight changes in colours (in case of SLA/Epoxy), and occurrence of tiny black points or a not perfectly even surface. Materialise will not accept any liability for these default.

The liability of Materialise vis-à-vis the Buyer for real and proven damage will, regardless the gravity of the failure, be limited to the price of the product directly related to the reason of the claim. All other liability of Materialise, such as that for consequential loss, other indirect loss and loss as a result of third party liability, is excluded.

Materialise may provide advisory services to the Buyer. Unless otherwise agreed, these services shall be provided free of charge, but shall be provided on the basis of information, documents and/or samples provided by, or on behalf of, the Buyer and shall be provided for the sole and exclusive benefit of the Buyer who will in its entire discretion decide on his actions as he sees fit. Materialise disclaims all liability with respect to such advice and neither Materialise nor any of its officers, employees or agents shall be liable to the Buyer nor any third party for any actions taken or not taken on the basis of such advice nor for any incorrect results arising from unclear, erroneous, incomplete, misleading or false information provided to Materialise.

Internet communications are capable of data corruption and therefore Materialise does not accept any responsibility for changes made to such communications after their dispatch. It may therefore be inappropriate to rely on information/advise contained in an e-mail without obtaining written confirmation of it. Materialise does not accept responsibility for any errors or problems that may arise through the use of Internet communication and all risks connected with sending commercially sensitive information relating to the Buyer's business are borne by the Buyer. If the Buyer does not agree to accept this risk, he should notify Materialise in writing that e-mail is not an acceptable means of communication.

Materialise is not liable in case of force majeure. Force majeure implies any circumstance beyond the control of Materialise – even if this circumstance was foreseeable at the time the agreement was concluded – which permanently or temporarily prevents fulfilment of the agreement, including in particular failure from Materialise suppliers (eg transport, production materials).

The Buyer shall inspect every supplied product and verify its conformity with the quotation promptly upon delivery and before using it. Goods must not be returned without

Materialise's prior written authorisation. In case no written, detailed notification of justified complaints has been received by Materialise within 3 working days after the delivery, the product is deemed to have been accepted. Omission by the Buyer to exercise this control or the use of a non-conform product shall constitute a waiver by the Buyer of all his rights vis-à-vis Materialise.

**TERM OF DELIVERY**

The estimated delivery time is based on the working conditions applicable at the time the agreement is concluded and on the punctual delivery of the materials ordered by Materialise for the production of the product. Should a delay rise for which Materialise is not responsible, as a result of a change in the aforementioned working conditions or because materials ordered in time for the performance of the work are not delivered on time, the delivery time shall be extended as required and Materialise cannot be held liable for such delay.

Unless otherwise agreed, the price shall be for delivery ex-works.

Upon request from the Buyer, Materialise shall arrange the Buyer's delivery requirements including, without limitation, transport insurance, the mode of transport (Materialise reserves the right to vary the mode of transport if any regulations or other relevant considerations so require) and any special packaging requirements. Arrangement by Materialise of transport shall not imply any liability to Materialise for such transport. For the avoidance of doubt all costs of delivery and packaging in accordance with the Buyer's requests over and above that of delivery in standard packaging ex-works shall be for the Buyer's account unless otherwise agreed by both parties. Any tax, duty or charge imposed by governmental authority or otherwise and any other applicable taxes, duties or charges shall be for the Buyer's account.

**CONDITIONS OF PAYMENT**

Except in the case where a special scheme of payment has been expressly agreed, all invoices are due 30 days after the date of invoice. Materialise reserves the right to charge advance payments and to supply products cash on delivery only, without any deduction. Any possible protest must be communicated within 10 days after the day of invoice. Late payment will cause, ipso jure and without notice, a late payment charge of 1,5 % for each elapsed and/or started month. In addition, overdue amounts will be increased with 15% for sales in Belgium and, because of the higher costs of recuperation, with 20% for any sale abroad, with an absolute minimum lump sum of 50 EURO as a forfeit for indemnity.

Offsetting against any kind of non-approved counter-claims as well as execution of right of retention of goods shall be excluded unless established in court, undisputed or recognised by Materialise. Materialise remains the sole owner of the products until their entire payment, transport and taxes included.

Separate parts of a quote can be invoiced separately. Materialise N.V. reserves the right to refrain from execution of further components of a quote, or of a following quote, or to terminate a delivery, as long as the outstanding issued invoices remain unpaid.

**GOVERNING LAW AND JURISDICTION**

Belgian law governs all agreements to which these conditions are entirely or partially applicable. In case of dispute, only the competent courts of the judicial area of the registered office of Materialise have exclusive jurisdiction.

**GENERAL**

These conditions regulate the entire relationship between Materialise and the Buyer. By acceptance of the quotation, the Buyer agrees not to refer to any of the terms and conditions that might appear on documents sent to Materialise. In case of conflict between these conditions and the agreement, the latter will prevail.



T: +32 16 39 66 11  
F: +32 16 39 66 00



[info@mgxbymaterialise.com](mailto:info@mgxbymaterialise.com)  
[www.mgxbymaterialise.com](http://www.mgxbymaterialise.com)